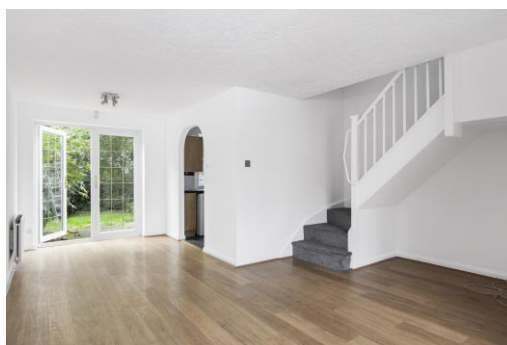




ENGEL JACOBS  
LONDON+HERTS



- 3 Bedroom House
- Quiet Cul-De-Sac
- Garden
- Large Reception
- 2 OSP spaces
- Within Easy Reach of the Town Centre and Elstree & Borehamwood Station



**Farm Close**  
Borehamwood

**Monthly Rental Of**  
**£1,750**



**Entrance Hall**

Wood flooring, radiator, alarm, coat cupboard.

**Downstairs WC**

Wood flooring, low level WC, corner wash basin with storage beneath, double glazed obscured window to front aspect, radiator.

**Reception 25' 10" x 15' 0" (7.87m x 4.57m)**

Wood flooring, double glazed windows to front aspect, double glazed French doors to rear aspect, radiators.

**Kitchen 10' 1" x 6' 10" (3.07m x 2.08m)**

Tiled floor, fully fitted units both wall mounted and base, Bosch freestanding fridge/freezer, Indesit integrated dishwasher, Baumatic oven and gas hob, Hoover washing machine, cupboard housing Combi boiler, double glazed windows to rear aspect.

**Bedroom 1 13' 1" x 8' 7" (3.98m x 2.61m)**

Carpeted throughout, double glazed windows to front aspect, wardrobes, radiator.

**Bedroom 2 12' 1" x 8' 3" (3.68m x 2.51m)**

Carpeted throughout, double glazed windows to rear aspect, wardrobes, access to loft, radiator.

**Bedroom 3 8' 10" x 6' 5" (2.69m x 1.95m)**

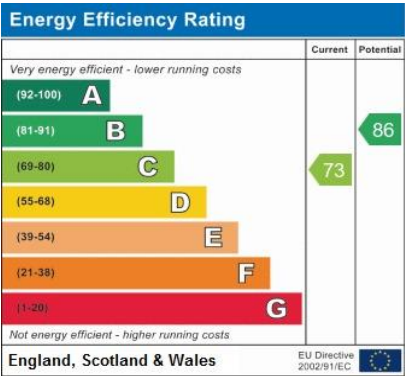
Carpeted throughout, double glazed windows to rear aspect, wardrobes, radiator.

**Bathroom 6' 10" x 6' 1" (2.08m x 1.85m)**

Tiled floor, partly tiled walls, low level WC, washbasin with mixer tap, storage cabinet, bath with overhead shower, double glazed obscured windows to front aspect, towel rail.

**Garden**

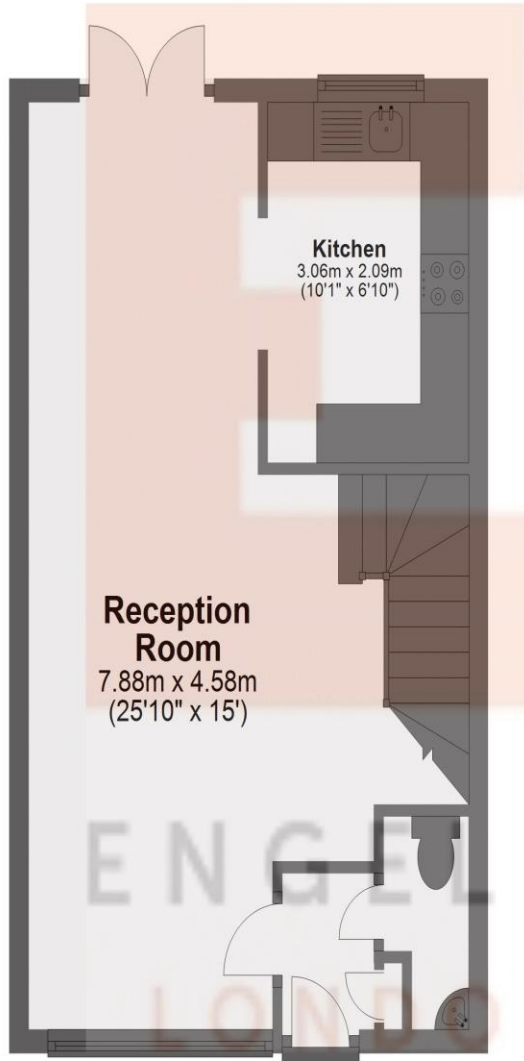
Patio, laid to lawn, rear gate, side gate.



Address:  
Farm Close, Borehamwood

## Ground Floor

Approx. 36.1 sq. metres (388.2 sq. feet)



## First Floor

Approx. 35.5 sq. metres (381.7 sq. feet)



Total area: approx. 71.5 sq. metres (769.9 sq. feet)